

TAXING UNIT 58

# EVERGREEN PARK SUBDIVISION NO. I

PREFIX 23-025

WEBER COUNTY

SCALE 1" = 200'

SEE P. 16

SEE P. 27

SEE P. 33

SEE P. 28

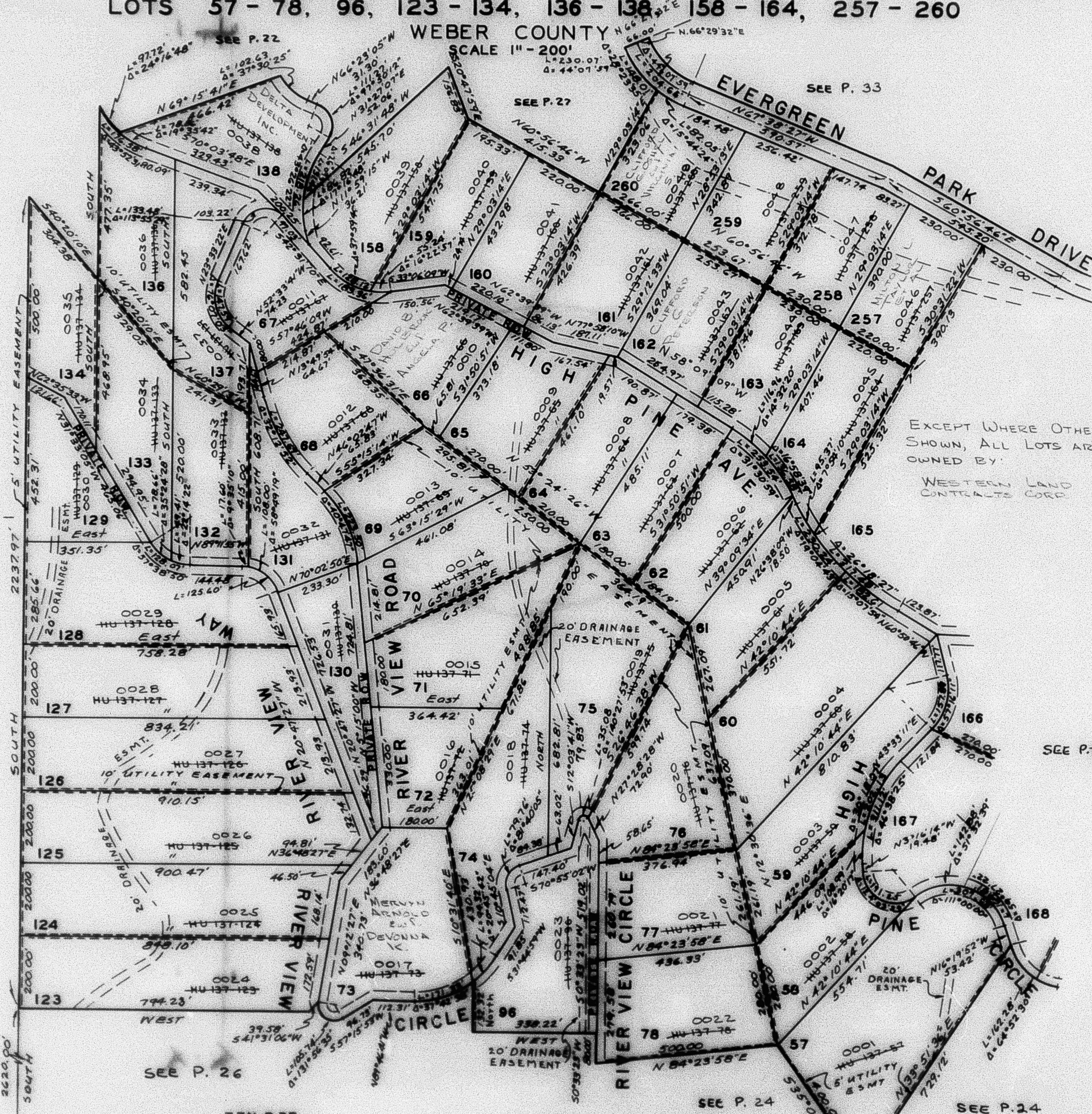
SEE P. 26

SEE P. 24

SEE P. 24

Note: See Original Plat, Book 13, Page 58 for complete Engineering Data and Lot Acres.

EXCEPT WHERE OTHERWISE SHOWN, ALL LOTS ARE OWNED BY:  
WESTERN LAND CONTRACTS CORP.



T.7N., R.3E.  
31/32  
6/5  
2929.22'  
589°54'00"E